

TQC SDM – Road Marking Gauge

Improve quality and save costs at the same time.



EASY TO USE

1. Ergonomic design
2. Robust aluminum casing
3. Handy construction

Order # [101-SP-1250](#)



EASY OPERATION

1. LCD display
2. On/off button
3. Scale metric/imperial
4. "Auto-Zero" button

Specifications:

Range: 0-25mm./0-10"
Resolution: 0.01mm./0.001"
Weight: 1500g
Battery: LR44 1,5V

The TQC SDM allows the user to quickly and accurately measure the thickness of road markings. A correct thickness improves the quality and avoids extra costs due to much use of coating material. Simply place the SDM on the road marking in such a way that the feeler part rests on the bare road adjacent to the marking. The thickness of the marking is indicated digitally. The TQC SDM is a robust gauge, which is entirely made out of machined aluminum, is designed for use in a harsh environment. As the heavy aluminum casing all round protects the digital gauge, there is practically no threat for mechanical damage. The SDM is suitable for every type of coating, with or without glass beads.

The SDM is supplied in a strong plastic case, complete with zero test plate, spare battery, allen key and certificate.

Users Manual

General:

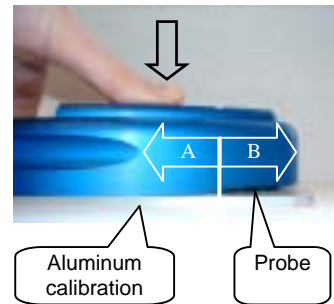
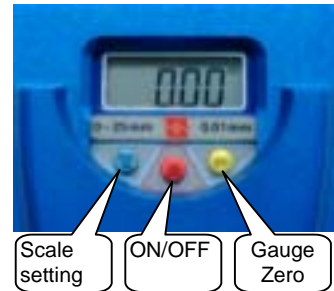
In front of you, you will find a gauge that measures the thickness of road-markings. In the case you should find the following components:

1. The SDM thickness gauge.
2. An aluminium calibration panel.
3. An Allen key

Usage:

The figure on the right shows how to operate the gauge with the 3 keys

1. Switch the gauge on by pressing the Red button
2. With the Blue button one can choose between imperial and metric.
3. Place the SDM on the aluminium calibration panel and press the gauge firmly down so the probe is completely pressed-in. Now press the Yellow button to "Zero" the gauge. The instrument is now ready for use.
4. To measure the thickness of a road marking, place part A of the gauge on the marking while part B rests on the asphalt.



Measuring:

Digital gauge

Range:

0 – 25mm, resolution 0.01mm

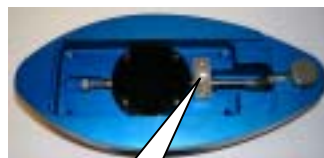
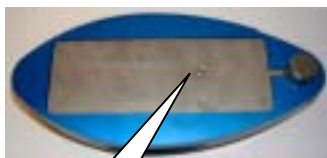
Weight:

1400g

Battery:

Type: LR44 - 1,5V

Change the battery as follows. Use the Allen-key to open the cover at the bottom by loosening the screw no 1. After loosening screw 2 and 3 the gauge can be lifted from the case. The battery compartment is found on the front side of the gauge below the cover. Slide the cover upwards to change the battery.



Maintenance:

Treat your SDM as a sensitive piece of equipment.

- Clean with a dry soft cloth, use no water or detergents.
- Avoid mechanical shocks