

## Dual Magnet Mount

**Models 400-312, 313, 314, 315, 330 F or C**



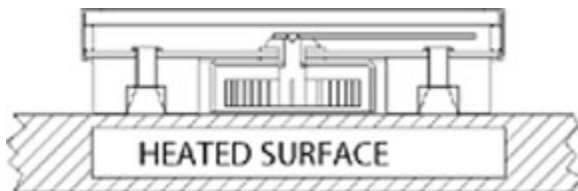
**Model 312C Shown**

PTC®'s Dual Magnet Mount Surface Thermometers are specifically designed to measure surface temperature. Used on any horizontal surface or held magnetically to any magnetic surface. These instruments feature two high temperature alnico magnets that act as the thermometer's base and hold the instrument in place on magnetic surfaces.

The bimetallic sensor is located in a draft shield and is in virtual thermal contact with the surface to be measured. This gives the instrument a relatively quick response time. The thermometer reaches sensing equilibrium (stability) within three minutes. Single or max-min ancillary hands are available for this instrument as an option.

Designed for applications such as: hot plates; griddles; die-cast dies; foundry core boxes; annealing ovens; weld preheats; motors, generators, and engines; bearings; boilers, tanks and drums; etc.

1. Accuracy  $\pm 2\%$  of full scale range
2. Time constant from 0.06 to 1 minute Depending on range
3. Dimensions Diameter 2-in. (5.1-cm) Height 1/2 in. (1.3 cm)
4. Weight 1-1/2 oz. (43g)
5. Shipping weight 1 lb. (454g)



Range	Model	Div.
0°F to 250°F	312F	2°
0°F to 500°F	313F	5°
50°F to 750°F	314F	10°
0°F to 150°F	315F	1°
-100°F to +160°	F 330F	2°
-20°C to +120°C	312C	2°
-20°C to +250°C	313C	5°
10°C to +400°C	314C	10°
-15°C to +65°C	315C	1°
-70°C to +70°C	330C	2°

Models listed above have no ancillary hands.

**Single or Dual Ancillary**

**Max-Min (Dual) Ancillary Hands**

The max-min hands are available on PTC®'s Dual Magnet Mount, Four Magnet Mount, and Tab Mount thermometers. These hand have been designed to provide the user an easy way to obtain both maximum and minimum temperatures for a given cycle. The ancillary hands are held in place be a non-impeding magnetic clutch. The hands are easily reset before each temperature cycle by using the reset knob and magnetic wand.

- Records highest and lowest temperatures reached
- Magnetic clutch holds hands at peak readings



- Shown with dual max-min hands
- 2 magnet base for easy mounting
- Our most versatile and most popular model

Range	Model	Div.
0°F to 250°F	312FMM	2°
0°F to 500°F	313FMM	5°
50°F to 750°F	314FMM	10°
0°F to 150°F	315FMM	1°
-100°F to +160°F	330FMM	2°
-20°C to +120°C	312CMM	2°
-20°C to +250°C	313CMM	5°
10°C to +400°C	314CMM	10°
-15°C to +65°C	315CMM	1°
-70°C to +70°C	330CMM	2°

Models listed above have MIN-MAX (dual) ancillary hands.

**Single Ancillary Hand**

This handy, resettable peak reading hand is available as an option for PTC®'s Dual Magnet Mount, Four Magnet Mount, and Tab thermometers. The ancillary hand is reset by simply turning the reset knob. A non-impeding magnetic clutch holds the hand in place at either the maximum or minimum temperature reached during a cycle.

Range	Model	Div.
0°F to 250°F	312FL	2°
0°F to 500°F	313FL	5°
50°F to 750°F	314FL	10°
0°F to 150°F	315FL	1°
-100°F to +160°F	330FL	2°
-20°C to +120°C	312CL	2°
-20°C to +250°C	313CL	5°
10°C to +400°C	314CL	10°
-15°C to +65°C	315CL	1°
-70°C to +70°C	330CL	2°

Models listed above have a single ancillary hand.