

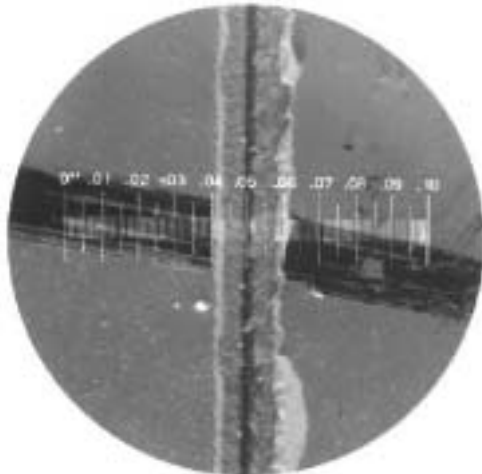
## Micro-Metrics Co. OG232 Cylinder Gauge

The Tooke Paint Inspection Gauge (Cylinder Gauge) is a precision tool for inspection and thickness measurement of single or multiple coats on any substrate, and for microscopic observation and measurement of substrate and film defects, using an illuminated 50-power microscope with measuring reticle. This high-end version provides superior illumination with three bulbs, is more stable in use, and carries all three tungsten carbide cutting tips (1×, 2×, and 10×) ready-mounted for immediate use. This version is preferred for inspection table use.

Since its introduction in 1963, the Tooke Paint Inspection Gauge has become an essential tool for coatings application quality control in both field maintenance painting and product finishing. Because it performs a direct measurement of total film thickness as well as thickness of individual coats (of contrasting colors), the Tooke Paint Inspection Gauge often finds use as a “referee” instrument and a calibration tool for indirect or non-destructive thickness measuring instruments. In addition to measurement of film thickness, the Tooke Paint Inspection Gauge can be used to assess substrate conditions and coating adhesion, and to observe microscopic checking and cracking, tendency for brittleness, blistering, cratering, or other microscopic film symptoms.



**Principle:** A special cutting tool that is integral to the gauge is used to incise a small precision V-groove through the paint film and into the substrate. This V-groove is observed vertically with an illuminated microscope bearing a measuring reticle (scale).



**Special applications:** The Tooke Gauge has been used to assess sandblast cleaning work, to measure plating and paint thickness on ceramics, metal, wood, and concrete, and even to measure protective backing thickness on mirrors. It is virtually the only tool for measuring paint on plastics. The quality of the incision in the film discloses much about the characteristics of the brittleness and adhesion of the material. The Micro-Metrics Tooke Paint Inspection Gauge (Cylinder) comes in a case with strap, spare batteries and bulb, hex wrench, marking pen, and a technical data sheet. Standard cutting tips are 1×, 2×, and 10×. An optional 5× tip is available. Also, the gauge can be ordered with three tips of the same size.

Cutting tip	Max. Coating Thickness	Precision of thickness determinations	One division on the reticle scale represents
1×	50 mils	± 0.25 mils	1.0 mil
2×	20 mils	0.13 mils	0.5 mil
10×	3 mils	0.025 mils	0.1 mil

A metric version of the gauge, with the reticle marked in micrometers, is available.

**Distributed in Canada by:**  
**QPC Instruments Inc.**